

The device contains a voltage divider with TTL digital output. The voltage divider also contains its own High Voltage power supply for operating the radiation detector.

Features:

- Highly anodized aluminium enclosure
- Can be mounted directly on a 14-pin base Detector
- Lockable cable connector
- RoHS Compliant
- Positive / Negative High Voltage operation
- SMA connector for signal
- USB connector for parameters like HV, LLD, ULD observation, and variation on PC using software
- External POT for gain control
- Optimized to work with different standard 2-inch and 3-inch detectors with 14-pin PMT available.



Voltage Divider Specification:

- Maximum Input voltage: 1500V
- Typical operating power: 800VDC to 1200VDC at <1mA (Voltage may vary depending upon type of PMT)
- Anode Output: AC Coupled
- Total divider Resistance: 4.3M Ω
- Anode Load Resistor: 1M Ω
- HV Gain range adjustment: Varies with PMT applied HV between 82% and 100% of applied voltage.
- High Voltage Connector: Miniature High Voltage Connector
- Signal Connector: Sub Miniature version A type Connector
- Voltage Ratio cathode to dynode: 1 is 3R
- Operating Temperature: -20°C to +60°C
- Conformal coated PCBs to protect from malfunctioning due to humidity

TTL Output Specification:

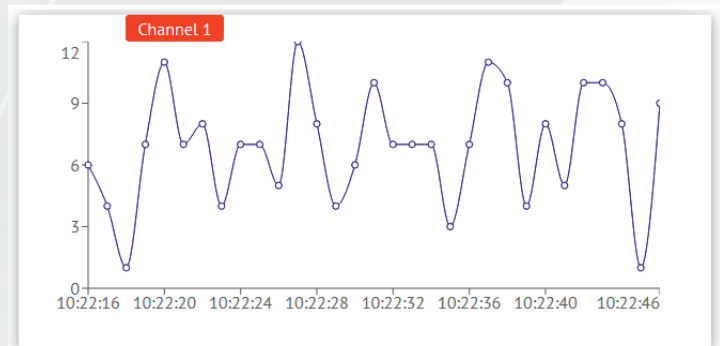
- Photomultiplier tube base.
- Integrates Preamplifier – Amplifier- Discriminator and HV Power Supply
- TTL output through SMA connector
- External Power Supply of 8V to 32V via a pluggable terminal block.
- The device can also be powered up through USB
- USB connector for HV, LLD, ULD signals
- The Parameters like HV, ULD, LLD can be varied through software.
- Live data can be visualised in the software

YELSONS INDIA PVT.LTD.

- Website: www.Yelsons.com
- E-Mail: info@yelsons.com
- Call: +91 9069067071
- Corporate Address -
Floor - 3, White House,
Bavdhan Pashan Road, Bavdhan, Pune - 411021

	HV	Readback	LLD	Readback	ULD	Readback	
Channel 1	1000		60		3300		SET
Channel 2	1000		60		3300		SET
Channel 3	1000		60		3300		SET
Channel 4	1000		60		3300		SET
Channel 5	1000		60		3300		SET
Channel 6	1000		60		3300		SET
Channel 7	1000		60		3300		SET
Channel 8	1000		60		3300		SET
Channel 9	1000		60		3300		SET
Channel 10	1000		60		3300		SET
Channel 11	1000		60		3300		SET
Channel 12	1000		60		3300		SET

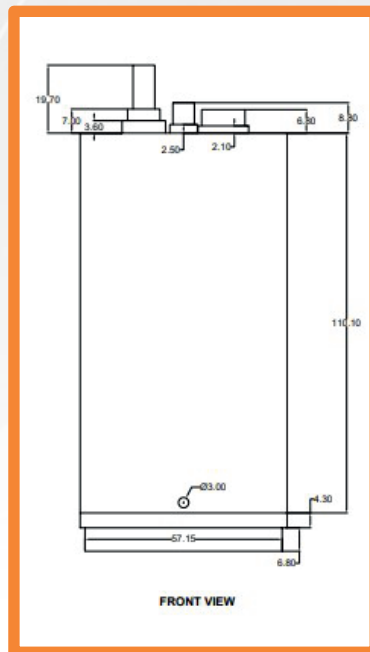
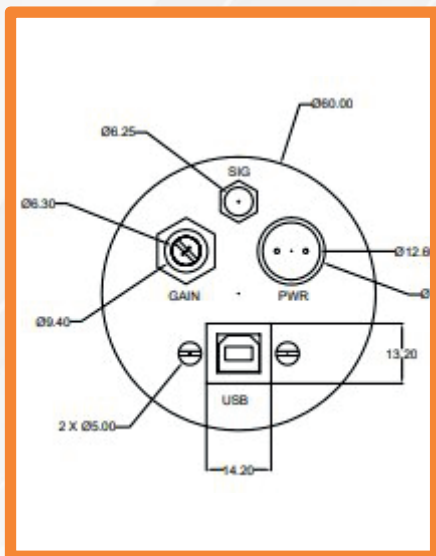
SET ALL



Options:

- Available with negative HV

Mechanical Specifications:



Product improvement is a continuous process. Please contact Yelsons marketing team for latest updates.

YELSONS INDIA PVT.LTD.

Website: www.Yelsons.com

E-Mail: info@yelsons.com

Call: +91 9069067071

Corporate Address -

Floor - 3, White House,

Bavdhan Pashan Road, Bavdhan, Pune - 411021